

# Undergraduate Open Day

---

Friday 27 and Saturday 28 June 2025 9.00-4.00







# Welcome to your Open Day

Find out  
more



## Students are at the heart of everything we do

At Newcastle you'll get a world-class education along with an outstanding student experience. Start your journey of self-discovery, be inspired to think differently and develop the confidence to pursue your passions.

At our Open Day you'll have the opportunity to meet current students to get a real insight into what it's like to study here, find out more about the courses you're interested in and meet staff from those areas.

You can also explore our beautiful city-centre campus and see our accommodation and other facilities.

Most importantly, you'll find out whether Newcastle is somewhere you could see yourself living and studying.

**Welcome to our campus – we hope you enjoy your day with us.**

## Don't forget to check-in!

There's plenty of places to register on campus. On the morning of the event we will send you a QR code, just come along to one of our information points or speak to a staff guide (look out for the dark blue Team Newcastle t-shirts) to check-in. Alternatively, you can check-in yourself via a text message you'll receive on the day.





# Your Open Day at a glance



## Gain an insight into student life

Through the flexible programme of sessions, talks, tours and other activities on offer today, we hope you gain an insight into what it's like to be part of our community of students from around the world.

## Welcome and arrival

The day runs from 9.00–4.00 and although you are welcome to arrive at any time, we recommend arriving as close to the start time as possible to get the most out of the day.

Head to our Welcome Desk in the King's Gate building (map ref 1), or our information trailer opposite the Students' Union (map ref 5) to collect your welcome pack and say hello!

**Visit our Student Experience Hub (map ref 4)** and meet our student life teams including accommodation, sport, student finance and many others. Come and chat to our friendly team if you have any questions about the day.

## How to check-in

On the morning of the event we will send you a QR code, just come along to one of our information points or speak to a staff guide (look out for the dark blue Team Newcastle t-shirts) to check-in. Alternatively, you can check-in yourself via a text message you'll receive on the day.

## Subject activities

Discover more about the courses you're interested in. Attend a choice of activities, including subject sessions and talks, where you can chat to our friendly teams and ask any questions you may have about your chosen subject on a one-to-one basis. **See pages 12-23**

## Discover more about student life

A range of Student life and applying to Newcastle sessions will run throughout the day. You can also speak to staff at our Student Experience Hub (map ref 4). **See pages 8-11**

## Teachers' and Careers Advisers' drop-in (Friday only)

Teachers and school staff are welcome to join us throughout the day for complimentary refreshments in the Armstrong Building (map ref 22). **See page 9**

## Campus tours

Go on a walking tour of our beautiful campus led by one of our current students. Our campus is relatively compact, so it's also easy to explore on your own. **See pages 6-7**

## Check out our student accommodation

See where you could live – all residences open are within walking distance from the main part of our campus. You can also catch a bus to our Wellington St Plaza accommodation if you prefer. **See pages 24-27**

## Visit our student facilities

Our Students' Union, Sports Centre, libraries, and Language Resource Centre will be open for you to look around and staff will be available to answer your questions. **See page 11**

## Discover Newcastle Helix

Explore Newcastle Helix, the landmark 24-acre hybrid city quarter in the centre of Newcastle. We have a number of sessions on this part of campus which is a short walk away or you can catch a bus running frequently from the centre of campus. Visit our information point outside the Student Experience Hub (map ref 4) to find out more.

Download our handy video for directions to Newcastle Helix



## Getting around

Our campus is compact, so it won't take you long to get to the different activities. As well as using the University map to find the location of activities listed in this programme, there will be lots of signage and students on campus to help with directions.

## Free wifi

To access free wifi on campus connect to **wifi Guest**, locate the box **Get online at Newcastle University** and click **Go**, scroll down to select **Create account** enter your details and the account will be created.

## Where to eat 🍴

There are lots of places on campus where you can stop for a drink or a bite to eat and enjoy a well-earned rest. **See page 32**





# Explore our campus



Find out more



## Discover our beautiful campus

Our city-centre campus is surprisingly compact and easy to get around.

## Campus tours

Go on a guided tour of the campus led by one of our student guides.

**Collect your ticket from the Student Forum (map ref 10).** Tours run every 30 minutes from 9.30–3.30 and take approximately 30–45 minutes.

## Explore on your own

If you don't have time for a guided tour, here are some of the main buildings and areas that you might see when you're walking to different activities.

## King's Gate

This may be the first building you see when you arrive, and where you will find our Welcome Desk. Recently refurbished to upgrade all our student facilities, it's home to our student support services such as Accommodation and Student Wellbeing. Next to King's Gate you'll find The Grand, a popular coffee stop on campus.

## Northern Stage

Opposite the Students' Union and across the lawn you'll see Northern Stage, the largest producing theatre company in the North East.

## Students' Union

The Grade II listed Students' Union building is the social hub of campus. You'll find everything from societies to the student newspaper, a Co-op shop and places to eat here, including a Subway and Domino's Pizza. Pop in and take a look around.

## The Arches

The Arches is one of the most iconic parts of campus. The tower was built in 1911 in honour of King Edward VII. Look closely and you might spot his statue which still looks out over campus.

## Old Quadrangle

Through the Arches you'll find one of the greenest parts of our campus – the Old Quadrangle. In 1947 the Quad was turned into a formal garden dedicated to Newcastle University staff and students who died in the two World Wars. To your left is the Armstrong Building and inside you'll find King's Hall, where graduation ceremonies are held.

## Student Forum

The Student Forum is a relaxing outdoor social space at the heart of the campus. Sit down and soak up the atmosphere under the watchful gaze of Newcastle University graduate Joseph Hillier's sculptures. Head through the Jubilee Arches and see the Martin Luther King statue, which was commissioned to mark the 50th anniversary of his visit to accept an honorary degree from Newcastle.

## Hatton Gallery

To the right of the Arches on King's Road you'll see the Hatton Gallery, which houses a diverse range of exhibitions and recently underwent a multimillion pound redevelopment. It also provides a platform for our Fine Art students to exhibit their work. Pop in to see the latest exhibitions.

## Sports Centre

Sport is big at Newcastle – we're ranked 8th overall for sport in the UK (British Universities and Colleges rankings 2023-24). We've invested £32 million in our facilities to provide you with more opportunities to take part in sport and exercise.

## Great North Museum: Hancock

The Great North Museum: Hancock includes a range of fascinating exhibits, from a scale replica T-Rex skeleton to mummies from Ancient Egypt. Entry is free and the University is a leading partner in the museum.

## Philip Robinson Library

Our main University library is open 24 hours a day, seven days a week during term time, and there's also a café inside if you're ready for a break.

## Farrell Centre

Instigated by renowned architect-planner Sir Terry Farrell, and forming part of Newcastle University's School of Architecture, Planning and Landscape. The Farrell Centre is located in a four-storey Victorian building which has been transformed into a £4.6 million project; its mission is to widen the debate around the crucial roles that architecture and planning play in the contemporary world in ways that are innovative, engaging and challenging.

Entry is free and combines a public gallery, research hub, and community space, offering a variety of experiences for visitors of all ages.

Take a video tour of our beautiful city-centre campus.







# Student Experience Hub



## Lindisfarne Room, Hadrian Building

9.00-4.00

(map ref 4)

Visit our interactive Student Experience Hub to find out more about how we support our students and speak to staff on a one-to-one basis. If you have any questions about our Open Day head to our helpdesk and our friendly team will be able to assist.

## Accommodation at Newcastle

Find out about the great-value range of student accommodation available at Newcastle, and how to apply.

## Undergraduate admissions

Speak to staff from our Admissions team about how to apply and what happens with your application once you've applied.

## Careers and placement years

Our Careers Service is one of the best, largest and most innovative in the UK. Find out about the support on offer, work placement opportunities, graduate job prospects and how we can support students with placement years.

## Global Opportunities

Discover more about opportunities to study abroad as part of your course or during the summer.

## PARTNERS – supported entry to Newcastle University

The PARTNERS Programme is our access programme and is open to eligible students across the UK. Applicants receive a PARTNERS offer which could be up to three grades lower than the standard offer and will take part in an academic summer school. PARTNERS also includes a programme of support which helps students to develop essential skills and prepare them for university.

## Student Health and Wellbeing

Find out about the free, professional and confidential support you could receive as a student at Newcastle.

## Student Financial Support Team

Information about tuition fees, student loans, scholarships, and the financial support and advice available at Newcastle.

## University Wide Language Programme

Find out more about the free language classes open to all students, which are offered by our School of Modern Languages.

## University Catering

Find out about the range of catering options for students on campus.

## Language Resource Centre

Discover how you can learn a language as part of, or in addition to, your studies at our Language Resource Centre.

## Students' Union

Speak to our Students' Union team and discover the range of societies and clubs that can enhance your Newcastle University experience.

## University Estates Team

Speak to our Security team to find out how we keep our students safe and look after our campus.

## Team Newcastle - sport

Discover the huge range of sports that you can get involved in at Newcastle, whatever your ability, and our range of sports scholarships to support talented students.

## A top university for Sport

As one of the UK's top universities for sport, we've invested £32 million in our sporting infrastructure to bring you a range of new and refurbished sports facilities.

Attend the sport talk or visit the stand to find out more about these exciting developments and the opportunities for you to get involved in sport at Newcastle.

Find out more



## Teachers' and Careers Advisers' drop-in Armstrong Building, Ground Floor, Rooms G.69/70

9.00–4.00, (map ref 22) (Friday only)

Teachers and school staff are welcome to join us throughout the day for complimentary refreshments.

You will also have the opportunity to:

- reclaim your school's travel expenses
- meet members of our Outreach team
- find out about opportunities to bring your students to bespoke follow-up events or book us in to visit your school/college
- learn about case studies and success stories from previous outreach events

## Agenda

9.00 Complimentary tea and coffee

11.30 Medicine admissions at Newcastle

Join us on the Open Day for a 30-minute talk from our Outreach Coordinator about how we will select for interview. This will cover how we look at achieved and predicted grades, the UCAT, the interview and how we make offers to students.

12.00 Complimentary buffet lunch

12.30 Outreach opportunities at Newcastle

Hear from key members of our Outreach team as they give an overview on Newcastle University's outreach provision. This will include opportunities for your students to attend further events and details of our supported entry routes.



# Student life sessions



Attend our Student life and applying to Newcastle sessions to learn about student finance, the application process and discover more about the many opportunities to expand your experience outside of your degree.

| Session                    | Description   | Location                       | Room              | Times                                  |
|----------------------------|---|--------------------------------|-------------------|--|
| Student life               | Hear from recent graduates on what student life is really like at Newcastle and how to make the most of your time here.   | Herschel Building (map ref 17) | Curtis Auditorium | 9.15-9.45<br>2.45-3.15                 |
| Applying to Newcastle      | Hear from our Admissions Team. Topics covered will include applications to places, how we make decisions and what we look for in personal statements and references.  | Herschel Building (map ref 17) | Curtis Auditorium | 10.00-10.30<br>1.15-1.45               |
| Sport and active wellbeing | Learn more about our multimillion pound investment in sports facilities, the many student-led sports clubs you can get involved in and opportunities to compete at a higher level.  | Herschel Building (map ref 17) | Lecture Theatre 2 | 10.00-10.30<br>1.15-1.45               |
| Living in Newcastle        | Colleagues from our student accommodation and estates teams will explain how to apply for our accommodation, how places are allocated and how we keep our students safe on campus.  | Herschel Building (map ref 17) | Curtis Auditorium | 10.45-11.15<br>2.00-2.30               |
| PARTNERS                   | Our PARTNERS Programme offers a range of support and opportunities to help you make a successful application to Newcastle University. By participating in the programme you could receive an offer which is up to three grades lower than the standard offer. | Herschel Building (map ref 17) | Lecture Theatre 2 | 10.45-11.15<br>12.30-1.00<br>2.00-2.30 |
| Global Opportunities       | Find out about opportunities to study abroad as part of your degree or during the summer, and how the experience can enhance your future prospects.   | Herschel Building (map ref 17) | Lecture Theatre 2 | 11.30-12.00                            |
| Student finance            | Find out about how to apply for student finance and what we are doing at Newcastle to support students with the rising cost of living.  | Herschel Building (map ref 17) | Curtis Auditorium | 11.30-12.00                            |



# Visit our student facilities



Take a look around our outstanding facilities and learn more about the opportunities available for our students.

|                          | Activity   | Location  | Times  |
|--------------------------|--|---|--|
| Accommodation            | Visit our accommodation throughout the day.<br><b>See pages 24-27 for which residences are open.</b>   | Sites open throughout campus  | Tours at residences run from 9.00 until 3.30                                   |
| Campus tours             | Take a student-led walking tour of our beautiful campus. Tours last approximately 30-45 minutes.   | Tickets and departures from the Student Forum (map ref 10)  | Tours run from 9.30 then every 30 minutes with the last tour departing at 3.30 |
| Language Resource Centre | The award-winning Language Resource Centre provides language-learning materials in over 150 languages. See facilities and find out more about the opportunities available.   | Language Resource Centre, Old Library Building (map ref 26)   | 9.30-3.30  |
| Libraries                | Our Library Service holds the prestigious Customer Service Excellence award for the quality of its services. Take a look around our fantastic facilities. Staff and students will be in our libraries throughout the day to explain the libraries' services and wealth of resources, and to answer your queries. | Philip Robinson Library – main library (map ref 35)<br>Walton Library – Medical School (map ref 60) | 9.00-4.00  |
| Sport                    | See our sport facilities, find out about the many student-led sports clubs you can get involved in and opportunities to receive sports scholarships.   | Sports Centre (map ref 70)  | 9.15-3.45  |



# Find the degree for you

Discover all you need to know about the subjects you're interested in and meet staff and students from those areas.

Our subject activity is your opportunity to explore various fields of study and gain insight into what life as a student is really like. Use the table in this section to find out about the talks, tours, and taster sessions you can take part in, and get a real feel for what it's like to study with us. These interactive sessions are designed to provide a deeper understanding of the subjects on offer.

Subject stands are conveniently located throughout our teaching buildings and are a great opportunity for you to meet our friendly teams, ask questions, and chat about your chosen subject in a relaxed, informal setting. You'll also get to speak with current students who can share their first-hand experiences and offer valuable advice.

Please note the map reference information refers to the detailed University map provided in your welcome pack, so be sure to check it out for easy navigation.

We look forward to seeing you there and helping you learn more about your academic interests.



### Shuttle bus to Newcastle Helix – Computer Science and Business School sessions

If you're attending a session taking place at Newcastle Helix (Urban Sciences Building or The Frederick Douglass Centre) you can get a shuttle bus from the information point outside the Student Experience Hub (map ref 4). Please allow at least 15 minutes for the journey in case of traffic.

If you would like to make your own way there download our handy video for directions.

Find out more

| Subject                        | Activity   | Building                 | Room                                | Time(s)  | Map ref |
|--------------------------------|--|--------------------------|-------------------------------------|--|---------|
| Agriculture and Animal Science |  |                          |                                     |  |         |
| Agriculture                    | Subject session  | Bedson Building          | 1st Floor, Room 1.75                | 1.30–2.20  | 20      |
|                                | Tour of facilities   | Boiler House             | Meet by the subject stand           | 11.30-12.15  | 10      |
|                                | Subject stand<br>Meet academic staff and student ambassadors | Boiler House             | Main event space                    | 9.00-3.00  | 10      |
| Animal Science                 | Subject session  | Bedson Building          | Ground Floor, Room G.04             | 12.30-1.15   | 20      |
|                                | Tour of facilities   | Boiler House             | Meet by the subject stand           | 1.15-2.00  | 10      |
|                                | Subject stand<br>Meet academic staff and student ambassadors | Boiler House             | Main event space                    | 9.00-3.00  | 10      |
| Archaeology                    |  |                          |                                     |  |         |
| Archaeology                    | Subject talk   | Armstrong Building       | 3rd Floor, Room 3.38                | 9.45–10.35<br>12.15-1.05   | 22      |
|                                | Tour of facilities   | Armstrong Building       | Follow on from subject talk         | 10.35-10.55<br>1.05-1.25   | 22      |
|                                | Subject stand  | Armstrong Building       | 1st Floor                           | 9.00–3.00  | 22      |
| Architecture                   |  |                          |                                     |  |         |
| Architecture                   | Subject talk   | King Edward VII Building | 2nd Floor, Fine Art Lecture Theatre | 9.30-10.20<br>12.00-12.50  | 29/30   |
|                                | Tour of facilities   | Building Science         | The Workshop                        | 9.30-10.00<br>10.00-10.30<br>10.30-11.00<br>11.00-11.30<br>11.30-12.00<br>12.00-12.30<br>1.30-2.00<br>2.00-2.30<br>2.30-3.00 | 28      |
|                                | Subject stand  | The Henry Daysh Building | 5th Floor                           | 9.00–3.00  | 32      |





| Subject                                     | Activity  | Building                 | Room                                  | Time(s)   | Map ref |
|---|---|--------------------------|---------------------------------------|---|---------|
| <b>Architecture continued</b>               |   |                          |                                       |   |         |
| <b>Architecture and Urban Planning</b>      | Subject talk  | The Henry Daysh Building | 5th Floor, 5.08 Planning Studio       | 11.00–11.50   | 32      |
|   | Tour of facilities  | The Henry Daysh Building | Follow on from subject talk           | 11.50–12.20   | 32      |
|   | Subject stand   | The Henry Daysh Building | 5th Floor                             | 9.00–3.00   | 32      |
| <b>Biology</b>                              |   |                          |                                       |   |         |
| <b>Biology and Zoology</b>                  | Subject session   | Bedson Building          | Ground Floor, Room G.04               | 9.30–10.20<br>11.30–12.20   | 20      |
|   | Tour of facilities  | Boiler House             | Meet by the subject stand             | 1.15–2.00   | 10      |
|   | Subject stands<br>Meet academic staff and student ambassadors | Boiler House             | Main event space                      | 9.00–3.00   | 10      |
| <b>Biomedical and Biomolecular Sciences</b> |   |                          |                                       |   |         |
| <b>Biomedical and Biomolecular Sciences</b> | Subject session   | Medical School           | 1st Floor, David Shaw Lecture Theatre | 10.00–10.45<br>1.00–1.45  | 60      |
|   | Tour of facilities  | Medical School           | 1st Floor, David Shaw Lecture Theatre | Tours will run regularly. Visit the subject stand and ask for a facilities tour | 60      |
|   | Subject stand   | Medical School           | 1st Floor, David Shaw Lecture Theatre | 9.00–3.00   | 60      |
|   |   |                          |                                       |   |         |

| Subject   | Activity   | Building                      | Room                           | Time(s)                                 | Map ref |
|---|--|-------------------------------|--------------------------------|---|---------|
| Business and business-related degrees (shuttle bus available to the sessions below – see page 12) |  |                               |                                |   |         |
| All Business School degrees   | Subject stands   | The Frederick Douglass Centre | Ground Floor Foyer             | 9.00-3.00                               | 106     |
| Accounting and Finance (including Flying Start with PwC)  | Subject talk   | The Frederick Douglass Centre | Ground Floor, Room G.41        | 10.00–10.40<br>1.00–1.40                | 106     |
| Business and International Business Management  | Subject talk   | The Frederick Douglass Centre | Ground Floor, Room G.56        | 10.30-11.00<br>12.15-12.45<br>2.40-3.10 | 106     |
| Economics   | Subject talk   | The Frederick Douglass Centre | Ground Floor, Room G.41        | 10.50-11.20<br>1.50-2.20                | 106     |
| Finance   | Subject talk   | The Frederick Douglass Centre | Ground Floor, Room G.06        | 11.50-12.20<br>2.00-2.30                | 106     |
| Marketing   | Subject talk   | The Frederick Douglass Centre | Ground Floor, Room G.06        | 11.10-11.40                             | 106     |
|   |  |                               | Ground Floor, Room G.56        | 1.30-2.00                               |         |
| Chemistry   |  |                               |                                |   |         |
| Chemistry   | Subject session  | Bedson Building               | 2nd Floor, Room 2.76           | 9.30-10.20<br>11.30-12.20<br>1.30-2.20  | 20      |
|   | Tour of facilities led by a Student Ambassador               | Bedson Building               | Follow on from subject session | 10.20-10.50<br>12.20-12.50<br>2.20-2.50 | 20      |
|   | Subject stand<br>Meet academic staff and student ambassadors | Boiler House                  | Main event space               | 9.00-3.00                               | 10      |
| Classics and Ancient History  |  |                               |                                |   |         |
| Classics and Ancient History  | Subject talk   | Armstrong Building            | 3rd Floor, Room 3.38           | 11.00–11.50<br>1.30–2.20                | 22      |
|   | Subject stand  | Armstrong Building            | 1st Floor                      | 9.00–3.00                               | 22      |





| Subject   | Activity  | Building                | Room                             | Time(s)   | Map ref |
|---|---|-------------------------|----------------------------------|---|---------|
| <b>Combined Honours</b>   |   |                         |                                  |   |         |
| <b>Combined Honours</b>   | Subject talk  | Armstrong Building      | 2nd Floor, Room 2.16             | 10.00–10.50<br>2.00–2.50  | 22      |
|   | Subject stand   | Armstrong Building      | 1st Floor                        | 9.00–3.00   | 22      |
| <b>Computer Science (shuttle bus available to the sessions below – see page 12)</b> |   |                         |                                  |   |         |
| <b>Computer Science</b>   | Subject session   | Urban Sciences Building | 1st Floor, Lecture Theatre 1.006 | 10.00–10.50<br>12.30–1.20   | 105     |
|   | Taster lecture  | Urban Sciences Building | 1st Floor, Lecture Theatre 1.006 | 11.00–11.30<br>1.30–2.00  | 105     |
|   | Tour of facilities  | Urban Sciences Building | Atrium                           | Tours will run regularly. Visit the subject stand and ask for a facilities tour | 105     |
|   | Subject stand<br>Meet academic staff and student ambassadors  | Urban Sciences Building | Atrium                           | 9.00–3.00   | 105     |
| <b>Data Science</b>   |   |                         |                                  |   |         |
| <b>Data Science</b>   | Subject talk<br>Introduction to Data Science at Newcastle<br>• What is Data Science?<br>• Is Data Science the right subject for me? | Herschel Building       | 4th Floor, Teaching Room 4       | 9.30–10.00<br>11.30–12.00   | 17      |
|   | Subject session   | Herschel Building       | Ground Floor, Lecture Theatre 3  | 10.00–10.50<br>12.00–12.50<br>2.00–2.50   | 17      |
|   | Interactive NUMBAS demonstration  | Herschel Building       | 1st Floor, Herschel Learning Lab | 11.00–12.00<br>1.00–2.00  | 17      |
|   | Subject stand<br>Meet academic staff and student ambassadors  | Herschel Building       | Ground Floor Foyer               | 9.00–3.00   | 17      |

| Subject  | Activity   | Building                 | Room   | Time(s)                   | Map ref |
|--|--|--------------------------|--|---------------------------|---------|
| <b>Dental Sciences (including Dental Surgery and Dental Therapy)</b> |  |                          |  |                           |         |
| <b>Dental Sciences (including Dental Surgery and Dental Therapy)</b> | Subject session  | Medical School           | 1st Floor, David Shaw Lecture Theatre            | 11.30–12.30               | 60      |
|  | Dental School tour   | Medical School           | Visit welcome stand in the foyer for information | Tours will run regularly  | 60      |
|  | Subject stand  | Medical School           | Ridley Atrium                                    | 9.00–3.00                 | 60      |
| <b>Environmental Science</b>   |  |                          |  |                           |         |
| <b>Environmental Science</b>   | Subject session  | Bedson Building          | 2nd Floor, Room 2.76                             | 10.30–11.20<br>12.30–1.20 | 20      |
|  | Tour of facilities   | Boiler House             | Meet by the subject stand                        | 1.30–2.15                 | 10      |
|  | Subject stand<br>Meet academic staff and student ambassadors   | Boiler House             | Main event space                                 | 9.00–3.00                 | 10      |
| <b>Education</b>   |  |                          |  |                           |         |
| <b>Education</b>   | Subject talk   | The Henry Daysh Building | Ground Floor, Room G.13                          | 11.10–12.00               | 32      |
|  | Subject stand  | Armstrong Building       | 1st Floor  | 9.00–3.00                 | 22      |
| <b>Engineering</b>   |  |                          |  |                           |         |
| <b>All Engineering degrees</b>                                       | Subject stands   | Stephenson Building      | Atrium   | 9.00–3.00                 | 50      |
|  | Subject talk<br>Introduction to Engineering at Newcastle<br>• What is Engineering?<br>• Student experience<br>• Which Engineering subject is for me? | Stephenson Building      | Atrium   | 10.00–10.30<br>1.00–1.30  | 50      |
| <b>Aerospace Engineering</b>   | Subject session and tour of facilities   | Stephenson Building      | 2nd Floor, Seminar Room 2.024                    | 10.45–12.00<br>1.45–3.00  | 50      |



| Subject   | Activity  | Building            | Room                               | Time(s)                   | Map ref |
|---|---|---------------------|------------------------------------|---------------------------|---------|
| <b>Engineering continued</b>  |   |                     |                                    |                           |         |
| <b>Chemical Engineering</b>   | Subject session and tour of facilities              | Merz Court          | 3rd Floor, Lecture Theatre L301    | 10.45-12.00<br>1.45-3.00  | 24      |
| <b>Civil Engineering</b>  | Subject session and tour of facilities              | Cassie Building     | 2nd Floor, Lecture Theatre 2.32    | 10.45-12.00<br>1.45-3.00  | 49      |
| <b>Electrical and Electronic Engineering</b>                            | Subject session and tour of facilities              | Stephenson Building | Ground Floor, Lecture Theatre G.34 | 10.45-12.00<br>1.45-3.00  | 50      |
| <b>Marine Engineering and Naval Architecture</b>                        | Subject session and tour of facilities              | Stephenson Building | 1st Floor, Room 1.010              | 10.45-12.00<br>1.45-3.00  | 50      |
| <b>Mechanical Engineering</b>   | Subject session and tour of facilities              | Stephenson Building | Ground Floor, Lecture Theatre G.06 | 10.45-12.00<br>1.45-3.00  | 50      |
| <b>English Language and Linguistics</b>                                 |   |                     |                                    |                           |         |
| <b>English Language and Linguistics</b>                                 | Subject talks including taster activities           | Percy Building      | Ground Floor                       | 11.30-12.20<br>1.30-2.20  | 23      |
|   | Subject stand 1: All degrees Including refreshments | Percy Building      | Ground Floor                       | 9.00-3.00                 | 23      |
|   | Subject stand 2: English Language and Literature    | Armstrong Building  | 1st Floor                          | 9.00-3.00                 | 22      |
| <b>English Literature</b>   |   |                     |                                    |                           |         |
| <b>English Literature (including with Creative Writing and History)</b> | Subject talks including taster activities           | Percy Building      | Ground Floor                       | 10.30-11.20<br>12.30-1.20 | 23      |
|   | Subject stand 1: All degrees Including refreshments | Percy Building      | Ground Floor                       | 9.00-3.00                 | 23      |
|   | Subject stand 2: English Literature and History     | Armstrong Building  | 1st Floor                          | 9.00-3.00                 | 22      |

| Subject  | Activity   | Building                 | Room                                | Time(s)                  | Map ref |
|--|--|--------------------------|-------------------------------------|--------------------------|---------|
| <b>Fine Art</b>  |  |                          |                                     |                          |         |
| <b>Fine Art</b>  | Subject talk   | King Edward VII Building | 2nd Floor, Fine Art Lecture Theatre | 10.40-11.30<br>1.10-2.00 | 29/30   |
|  | Tour of facilities, followed by meeting staff and current students | King Edward VII Building | Follow on from subject talk         | 11.30-12.00<br>2.00-2.30 | 29/30   |
|  | Subject stand  | Armstrong Building       | 1st Floor                           | 9.00-3.00                | 22      |
| <b>Food and Land Management</b>  |  |                          |                                     |                          |         |
| <b>Agri-business Management and Food Business Management and Marketing</b> | Subject session  | Bedson Building          | 1st Floor, Room 1.75                | 11.30-12.20              | 20      |
|  | Subject stand Meet academic staff and student ambassadors          | Boiler House             | Main event space                    | 9.00-3.00                | 10      |
| <b>Sustainable Land and Business Management</b>                            | Subject session  | Bedson Building          | Ground Floor, Room G.04             | 10.30-11.20              | 20      |
|  | Subject stand Meet academic staff and student ambassadors          | Boiler House             | Main event space                    | 9.00-3.00                | 10      |
| <b>Geography</b>   |  |                          |                                     |                          |         |
| <b>Geography</b>   | Subject talk and tour of facilities                                | The Henry Daysh Building | 1st Floor, Room 1.02                | 9.45-10.35<br>12.15-1.05 | 32      |
|  | Subject stand  | The Henry Daysh Building | 1st Floor                           | 9.00-3.00                | 32      |
| <b>History</b>   |  |                          |                                     |                          |         |
| <b>History</b>   | Subject talk   | Armstrong Building       | 2nd Floor, Room 2.98                | 11.50-12.40<br>2.05-2.55 | 22      |
|  | Subject stand  | Armstrong Building       | 1st Floor                           | 9.00-3.00                | 22      |





| Subject                                  | Activity   | Building                              | Room                              | Time(s)                                 | Map ref |
|--|--|---------------------------------------|-----------------------------------|---|---------|
| <b>Law</b>                               |  |                                       |                                   |   |         |
| <b>Law</b>                               | Subject talk   | Newcastle Law School, Windsor Terrace | Ground Floor, Law Lecture Theatre | 10.00-10.50<br>12.00-12.50<br>2.00-2.50 | 38      |
|  | Drop-in and tour of facilities                               | Newcastle Law School, Windsor Terrace | Meet in Law School Reception      | 9.30-3.00                               | 38      |
|  | Subject stand  | Armstrong Building                    | 1st Floor                         | 9.00-3.00                               | 22      |
| <b>Mathematics and Statistics</b>        |  |                                       |                                   |   |         |
| <b>Mathematics and Statistics</b>        | Subject session  | Herschel Building                     | Ground Floor, Lecture Theatre 3   | 10.00-10.50<br>12.00-12.50<br>2.00-2.50 | 17      |
|  | Interactive NUMBAS demonstration                             | Herschel Building                     | 1st Floor, Herschel Learning Lab  | 11.00-12.00<br>1.00-2.00                | 17      |
|  | Subject stand<br>Meet academic staff and student ambassadors | Herschel Building                     | Ground Floor Foyer                | 9.00-3.00                               | 17      |
| <b>Marine Biology and Marine Zoology</b> |  |                                       |                                   |   |         |
| <b>Marine Biology and Marine Zoology</b> | Subject session  | Bedson Building                       | 1st Floor, Room 1.75              | 10.30-11.20<br>12.30-1.20               | 20      |
|  | Tour of facilities   | Boiler House                          | Meet by the subject stand         | 1.45-2.30                               | 10      |
|  | Subject stand<br>Meet academic staff and student ambassadors | Boiler House                          | Main event space                  | 9.00-3.00                               | 10      |
| <b>Media, Journalism and Film</b>        |  |                                       |                                   |   |         |
| <b>Media, Journalism and Film</b>        | Subject stand  | Armstrong Building                    | 1st Floor                         | 9.00-3.00                               | 22      |
| <b>Film</b>                              | Subject talk   | Culture Lab                           | The Ballroom                      | 10.00-10.50<br>2.00-2.50                | 7       |
|  | Tour of facilities   | Culture Lab                           | Follow on from subject talk       | 10.50-11.10<br>2.50-3.10                | 7       |

| Subject   | Activity   | Building             | Room  | Time(s)                     | Map ref |
|---|--|----------------------|---|-----------------------------|---------|
| <b>Media, Journalism and Film continued</b>       |  |                      |   |                             |         |
| <b>Media and Journalism</b>                       | Subject talk                                       | Herschel Building    | Ground Floor, Curtis Auditorium                       | 12.15-1.05                  | 17      |
|   | Tour of facilities                                 | Herschel Building    | Follow on from subject talk                           | 1.05-1.50                   | 17      |
| <b>Medicine (including Accelerated Programme)</b> |  |                      |   |                             |         |
| <b>Medicine (including Accelerated Programme)</b> | Subject session                                    | Dental School        | Ground Floor, RB Green Lecture Theatre                | 10.00-10.55<br>1.00-1.55    | 63      |
|   | Clinical skills and simulation demonstrations      | Medical School       | Visit welcome stand in foyer for information          | Sessions will run regularly | 60      |
|   | Subject stand                                      | Medical School       | Ridley Atrium   | 9.00-3.00                   | 60      |
| <b>Modern Languages</b>                           |  |                      |   |                             |         |
| <b>Modern Languages</b>                           | Subject talk                                       | Armstrong Building   | 2nd Floor, Room 2.98                                  | 10.40-11.30<br>1.00-1.50    | 22      |
|   | Exploring languages in context taster session      | Armstrong Building   | Ground Floor, Room G.08                               | 12.00-12.50                 | 22      |
|   | Chat to staff and students from each language area | Old Library Building | Language Resource Centre                              | 11.30-1.00<br>1.50-3.00     | 25/26   |
|   | Subject stand                                      | Armstrong Building   | 1st Floor   | 9.00-3.00                   | 22      |
| <b>Music</b>                                      |  |                      |   |                             |         |
| <b>Music</b>                                      | Subject talk                                       | Armstrong Building   | Ground Floor, Robert Boyle Lecture Theatre, Room G.42 | 11.00-11.50<br>1.00-1.50    | 22      |
|   | Tour of facilities                                 | Armstrong Building   | Follow on from subject talk                           | 11.50-12.20<br>1.50-2.20    | 22      |
|   | Subject stand                                      | Armstrong Building   | 1st Floor   | 9.00-3.00                   | 22      |



| Subject                                     | Activity   | Building                       | Room                               | Time(s)                    | Map ref |
|---|--|--------------------------------|------------------------------------|----------------------------|---------|
| <b>Nutrition and Dietetics</b>              |  |                                |                                    |                            |         |
| <b>Nutrition and Dietetics</b>              | Subject session and tour of facilities                       | Dame Margaret Barbour Building | Ground Floor, Lecture Theatre G.01 | 12.00-1.45                 | 110     |
|   | Subject stand  | Dame Margaret Barbour Building | Ground Floor Foyer                 | 9.00-3.00                  | 110     |
| <b>Pharmacy</b>                             |  |                                |                                    |                            |         |
| <b>Pharmacy</b>                             | Subject session  | Dental School                  | Ground Floor, Lecture Theatre C    | 10.00-10.45<br>12.00-12.45 | 63      |
|   | Subject stand  | Medical School                 | Ridley Atrium                      | 9.00-3.00                  | 60      |
| <b>Philosophy</b>                           |  |                                |                                    |                            |         |
| <b>Philosophy</b>                           | Subject talk   | The Henry Daysh Building       | Ground Floor, Room G.13            | 10.00-10.50<br>1.30-2.20   | 32      |
|   | Subject stand  | Armstrong Building             | 1st Floor                          | 9.00-3.00                  | 22      |
| <b>Physics</b>                              |  |                                |                                    |                            |         |
| <b>Physics</b>                              | Subject session followed by lab demo                         | Herschel Building              | Ground Floor, Lecture Theatre 3    | 11.00-12.10<br>1.00-2.10   | 17      |
|   | Subject stand<br>Meet academic staff and student ambassadors | Herschel Building              | Ground Floor Foyer                 | 9.00-3.00                  | 17      |
| <b>Politics and International Relations</b> |  |                                |                                    |                            |         |
| <b>Politics and International Relations</b> | Subject talk followed by tour of facilities                  | The Henry Daysh Building       | 1st Floor, Room 1.02               | 11.00-11.50<br>1.30-2.20   | 32      |
|   | Subject stand  | The Henry Daysh Building       | 1st Floor                          | 9.00-3.00                  | 32      |
| <b>Psychology and Cognitive Science</b>     |  |                                |                                    |                            |         |
| <b>Psychology and Cognitive Science</b>     | Subject session  | Dame Margaret Barbour Building | Ground Floor, Lecture Theatre G.01 | 11.00-11.45<br>2.00-2.45   | 110     |
|   | Subject stand  | Dame Margaret Barbour Building | Ground Floor Foyer                 | 9.00-3.00                  | 110     |

| Subject                             | Activity                               | Building                       | Room                               | Time(s)                   | Map ref |
|-------------------------------------|--|--------------------------------|------------------------------------|---------------------------|---------|
| <b>Sociology</b>                    |  |                                |                                    |                           |         |
| <b>Sociology</b>                    | Subject talk including taster          | The Henry Daysh Building       | 6th Floor, Room 6.16               | 10.00-10.50<br>12.30-1.20 | 32      |
|                                     | Subject stand                          | The Henry Daysh Building       | 1st Floor                          | 9.00-3.00                 | 32      |
| <b>Speech and Language Sciences</b> |  |                                |                                    |                           |         |
| <b>Speech and Language Sciences</b> | Subject talk                           | Armstrong Building             | 2nd Floor, Room 2.16               | 11.10-12.00               | 22      |
|                                     | Subject stand                          | Armstrong Building             | 1st Floor                          | 9.00-3.00                 | 22      |
| <b>Sport and Exercise Science</b>   |  |                                |                                    |                           |         |
| <b>Sport and Exercise Science</b>   | Subject session and tour of facilities | Dame Margaret Barbour Building | Ground Floor, Lecture Theatre G.01 | 12.00-1.45                | 110     |
|                                     | Subject stand                          | Dame Margaret Barbour Building | Ground Floor Foyer                 | 9.00-3.00                 | 110     |
| <b>Urban Planning</b>               |  |                                |                                    |                           |         |
| <b>Urban Planning</b>               | Subject talk                           | The Henry Daysh Building       | 5th Floor, 5.08 Planning Studio    | 9.45-10.35<br>1.30-2.20   | 32      |
|                                     | Tour of facilities                     | The Henry Daysh Building       | Follow on from subject talk        | 10.35-11.05<br>2.20-2.50  | 32      |
|                                     | Subject stand                          | The Henry Daysh Building       | 5th Floor                          | 9.00-3.00                 | 32      |



The staff and students were amazingly kind, funny and welcoming. The facilities were astounding and I loved the community. Newcastle has definitely become my top choice after Open Day.

**Prospective student**

Undergraduate Open Day, November 2024





# See where you could live



## Key



En suite options



Washbasin options



Studio options



Self-catered options



Accessible

Find out more



From traditional university rooms to modern city centre apartments - this is where you'll experience student life, make new friends, and where you'll start making your dreams a reality...

**We have a range of accommodation for you to view, all within easy reach of the campus and city centre.**

You can visit the accommodation sites anytime between 9.00-3.30, where our friendly staff and students will be waiting to welcome you and give you a tour of a flat and room. Allow up to 30 minutes to look around each of the residences.

For information on our full suite of residences see our Accommodation Guide in your welcome pack.

## Getting there



### Walking...

You can easily walk to all of our accommodation – see the event map on page 33 or look out for our Student Ambassadors to help point you in the right direction.



### Shuttle...

You can make use of our shuttle bus service from Hadrian Building (map ref 4), to visit Wellington St Plaza. Buses leave approximately every 15 minutes and will bring you back from the accommodation site if you prefer not to walk. The last bus leaves campus at 3.00.



### Visitors with mobility issues...

If any of your party is a wheelchair user or has walking difficulties, please let a member of staff know. We can arrange for a taxi to take you to the residences you would like to visit.

## Need an accessible room?

We have one open for viewings at Park View - just let us know when you arrive, and we can show you around.



**I settled in very quickly. My flat was very sociable and most nights we would watch films, play games and cook together. I still live with three of these flatmates.**

**Katie**

Biomedical Sciences BSc (Hons)

## Accommodation available to view today



### Kensington Terrace

A selection of 10 beautifully converted town houses conveniently located near the centre of campus. With en suite, premium en suite or studio rooms available and on-site laundrette and bike storage; Kensington Terrace is in a prime location to begin your student journey.

### Walking distance from central campus\*

5 minutes

### Map ref

46

### Close to

Centre of campus, Library buildings

### Room type available



### Weekly rent\*\*

From £187.25



### Park Terrace

Provides en suite or premium en suite bedrooms in self-catered flats varying in size from six to eleven bedrooms. Each flat has a contemporary kitchen and comfortable common area with flat-screen TV. Just a stone's throw away from the centre of campus, this accommodation is in a great location.

### Walking distance from central campus\*

6 minutes

### Map ref

45

### Close to

Centre of campus, Library buildings

### Room type available



### Weekly rent\*\*

From £187.25

\*Distance from the Students' Union (map ref 5).

\*\*Prices shown are for the academic year 2025/26. Please note, prices may change for future academic years.





**Park View**

This accommodation offers modern, spacious flats. The high-quality facilities include two on-site laundries, a central social space with gaming area, and dedicated study zones.

**Walking distance from central campus\***  
14 minutes

**Map ref**  
73

**Close to**  
Sports Centre, Medical and Dental Schools

**Room type available**



**Weekly rent\*\***  
From £187.25



**Wellington St Plaza**

This site offers spacious rooms with stylish state-of-the-art décor and furnishings, and has a small supermarket conveniently located right on its doorstep. The shared social space includes a games console and pool table. If you don't want to walk the shuttle bus will take you, see page 12 for more information.

**Walking distance from central campus\***  
14 minutes

**Map ref**  
56

**Close to**  
Newcastle University Business School, Leazes Park, Newcastle Helix

**Room type available**



**Weekly rent\*\***  
From £169.34



**Windsor Terrace**

Recently refreshed and situated next to the main University library, Windsor Terrace offers great value self-catered accommodation in a convenient location. Each flat has an open-plan kitchen/living room area with washbasin or en suite room options available.

**Walking distance from central campus\***  
6 minutes

**Map ref**  
42–44

**Close to**  
Library buildings, Newcastle Law School

**Room type available**



**Weekly rent\*\***  
From £135.80

\*Distance from the Students' Union (map ref 5).  
\*\*Prices shown are for the academic year 2025/26. Please note, prices may change for future academic years.



**Have any questions about our accommodation?**

Visit our team at the Student Experience Hub in the Hadrian Building (map ref 4). You can also find out more at the Living in Newcastle session (see page 10).

Find out more







# Destination Newcastle

Find out  
more



Quayside

## A special place

Famous for its friendliness, vibrant nightlife and beautiful architecture, Newcastle also offers great shopping, dining and world-class cultural events and attractions.

Even if you're just visiting for a day, as the University is in the city centre, it's worth taking time to sample what the city has to offer while you're here.

## Getting around

Newcastle is a very compact city, so it's easy to get around on foot. Pick up a University map leaflet from one of our information points, and you'll find a city-centre map included on the inside.

## Staying overnight

If you're staying overnight and have more time to explore, you'll find lots of ideas for things to do in the city on the NewcastleGateshead tourism information website [newcastle Gateshead.com](http://newcastle Gateshead.com)

For event listings and Newcastle city-centre offers visit [getintonewcastle.co.uk](http://getintonewcastle.co.uk)

## Where to go

Here are just a few places to visit within easy reach of our University.

- Just minutes away from campus is Northumberland Street, Newcastle's main shopping street and Eldon Square, one of the UK's largest city-centre shopping centres, with over 130 stores and several cafés and restaurants.
- Grainger Town is home to lots of restaurants, independent and high street shops, and a bustling indoor market.
- Take the QuayLink bus from Haymarket Bus Station to the Quayside to see the famous bridges. You'll find a variety of attractions here – including the BALTIC Centre for Contemporary Art and The Glasshouse International Centre for Music.
- Within walking distance of campus is Jesmond, a popular student suburb. Enjoy the café culture, discover vintage traders and stylish independent fashion boutiques, plus some of the best bars and restaurants in the region.
- Further along from the Quayside is Ouseburn – a hip residential area home to a thriving arts scene, with venues such as The Cluny, Tyne Bar and The Cumberland Arms providing platforms for artists, poets and performers.





# Discover our North East

Find out  
more



Angel of the North



Bamburgh Castle



Tynemouth



Hadrian's Wall

## Welcome to our home

With stunning landscapes, charming market towns, dramatic castles and breathtaking coastline there's so much to discover in our North East.

Combine this with our reputation as one of the most friendly and affordable cities in the UK, and Newcastle is the perfect place to study.

## Northumberland – Hadrian's Wall country

Take a westbound train from Newcastle and discover the Tyne Valley – from picturesque Corbridge Village to the ancient market town of Hexham.

From Haltwhistle, the self-proclaimed Centre of Britain you can explore some of the best sections of Hadrian's Wall, a UNESCO World Heritage Site.

## Morpeth, Alnmouth, Berwick-upon-Tweed

The East Coast Mainline will transport you to the market town of Morpeth, and Alnmouth famed for its colourful houses on the banks of the River Aln. England's most Northern town of Berwick-upon-Tweed is also worth a visit.

## Durham

Just 15 minutes by train and you'll be in Durham. Wander the cobbled streets and soak up the atmosphere, a river cruise is a 'must-do' in the warmer months. Head to the majestic cathedral and castle the city is known for – it's impossible to miss!

## Explore the coast

Just 25 minutes' away by Metro, the coastal towns of Whitley Bay and Tynemouth are easily accessible and provide a wealth of seaside delights: unspoilt golden sandy beaches, fish and chips, surf lessons, an aquarium, craft markets and more...





# Where to eat on campus



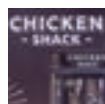
**The Grand**  
7.30-4.00 (Friday), 8.30-4.00 (Saturday)  
(map ref 8)  
The Grand offers a cosy café atmosphere with drinks and delicious sandwiches.



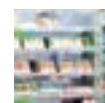
**Courtyard**  
8.00-3.00 (Friday only)  
(map ref 25)  
Newly refurbished and located in the Old Library Building, with plenty of hot meals on offer, you'll be spoilt for choice.



**Bites**  
8.00-3.00 (Friday), 9.00-3.00 (Saturday)  
(map ref 63)  
Located in the Dental School, Bites offers a wonderful selection of sandwiches, paninis, pastries, jacket potatoes and snacks.



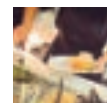
**Chicken Shack**  
11.00-3.00  
(map ref 4)  
Located opposite Luther's Bar in the Hadrian Building, you can enjoy a variety of halal chicken burgers, wraps, fries and more.



**Philip Robinson Library**  
10.00-3.00  
(map ref 35)  
Located in the University's main campus library, serving a selection of drinks, sandwiches, and sweet treats.



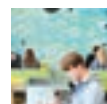
**The Henry Daysh Café**  
8.30-3.30  
(map ref 32)  
Enjoy a range of hot drinks, sandwiches and treats, with plenty of vegetarian and plant-based options.



**Sports Centre Café**  
9.30-2.30  
(map ref 70)  
Located in the University's Sports Centre close to Park View Student Village. Serving hot drinks, sandwiches and snacks.



**Street Kitchen**  
11.30-2.00  
(map ref 10)  
Located by the Arches, in the Student Forum, offering a range of delicious, authentic street food.



**Urban**  
9.00-2.30  
(map ref 105)  
Located in the Urban Sciences Building in Newcastle Helix. Enjoy a large selection of barista coffees, paninis and snacks.



**Lucca Pizza**  
from 11.00  
(map ref 60)  
Located outside the Medical School serving a selection of pizzas.



## KEY

- CT CAMPUS TOURS (STUDENT FORUM)
- IP INFORMATION POINT
- WD WELCOME DESK (KING'S GATE)
- WHERE TO EAT
- GT GENERAL TALKS
- SH STUDENT EXPERIENCE HUB (HADRIAN BUILDING)
- STUDENT ACCOMMODATION

For information regarding building accessible entrances, accessible lifts and public toilets please refer to the detailed University map in your welcome pack.



# Our sustainable campus

**Caring for our world, today and tomorrow**

We want to protect our planet and your future, that's why we're taking climate change action.

Ranked in the world top 60 for our commitment to sustainable development\*, we aim to reduce our environmental impact and reach net-zero carbon dioxide emissions by 2030.

We're working to:

- reduce carbon emissions with a biofuel combined heat and power plant that generates electricity, harnessing waste heat in six buildings
- install solar photovoltaic panels on 50 campus buildings
- reduce the energy we use with LED lighting, heating and ventilation system upgrades
- lower our carbon footprint – choosing to refurbish rather than rebuild whenever we can
- manage our water consumption with sustainable initiatives and daily monitoring
- reduce flood risk with sustainable roof drainage systems at The Henry Daysh Building and Stephenson Building
- improve campus wildlife habitats with extra wildflower planting, bat boxes and a safe environment for hedgehogs – we hold the Hedgehog Friendly Campus Silver Award and a Green Flag award

Join us and be part of the change.

\*QS World University Rankings: Sustainability 2025



## Solar photovoltaic panels at Newcastle Helix



# Planning your day

Make the most of your day and plan the talks and tours you wish to attend by using this planner.

| Time(s) | Activity | Location | Map reference |
|---------|----------|----------|---------------|
|         |          |          |               |
|         |          |          |               |
|         |          |          |               |
|         |          |          |               |
|         |          |          |               |
|         |          |          |               |
|         |          |          |               |
|         |          |          |               |
|         |          |          |               |
|         |          |          |               |
|         |          |          |               |
|         |          |          |               |

Have a safe journey home!





# Useful information

## In case of emergency

Contact the nearest member of staff. In the event of a fire alarm, please vacate the building immediately by the nearest exit.

## Photography and filming

Some photography and filming will be taking place on the day to appear in future Newcastle University printed and digital publicity. Please let the photographer or a member of staff know if you do not want to have your photo taken, or be filmed.

## Meeting point and lost property

If you become separated from your party please meet at the Campus tours helpdesk (Student Forum, map ref 10). For lost property visit the Student Experience Hub (Hadrian Building, map ref 4).

## Further information

For further information, please contact:  
Newcastle University  
Open Day Team  
Email: [open.day@ncl.ac.uk](mailto:open.day@ncl.ac.uk)  
[ncl.ac.uk/openday](https://ncl.ac.uk/openday)

---

Illustrative material has been provided by P Appleby; C Bishop; Catering Services; J Donoghue; Elemental Photography; Northern Horizons; G Peacock; Unite; A Wallace.

Details included in this programme are correct at the time of printing (June 2025). The most up-to-date and detailed source of information at any time is the undergraduate website [ncl.ac.uk/undergraduate](https://ncl.ac.uk/undergraduate)

**All sessions are subject to change.** Full details of the University's terms and conditions, including reference to all relevant policies, procedures, regulations and information provision are available at [ncl.ac.uk/student-contract](https://ncl.ac.uk/student-contract)

Please help keep our campus a smoke-free zone.

Designed by Perro. Printed by Statex.

© Newcastle University, 2025. The University of Newcastle upon Tyne trading as Newcastle University.

 [newcastleuni](https://www.instagram.com/newcastleuni)

 [newcastleuni](https://www.tiktok.com/newcastleuni)

 [newcastleuni](https://www.youtube.com/newcastleuni)

 [school/newcastle-university](https://www.linkedin.com/school/newcastle-university)

 [newcastleuniversity](https://www.facebook.com/newcastleuniversity)

 [@uniofnewcastle](https://twitter.com/uniofnewcastle)

[#nclvisit](https://twitter.com/uniofnewcastle)